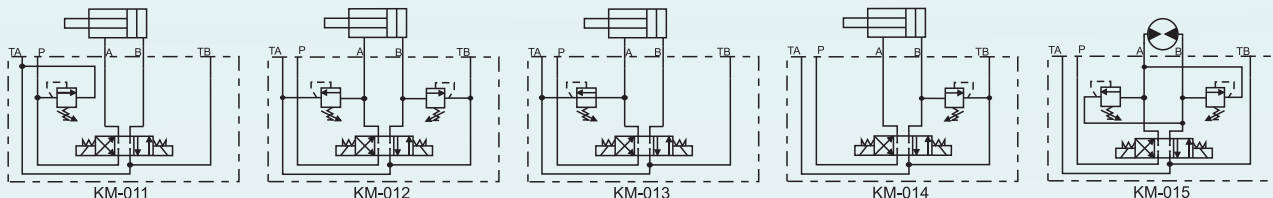
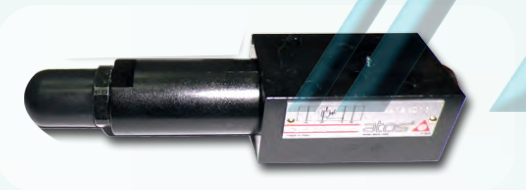




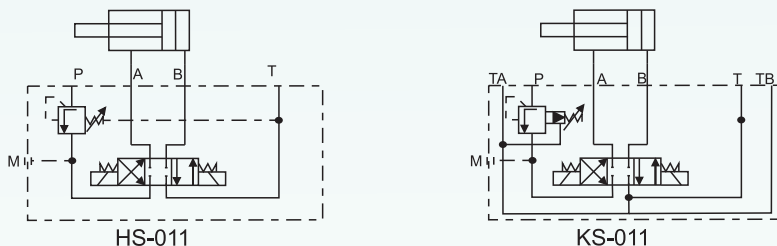
**LIMITADORA DE PRESIÓN
NG-10 (CETOP 5)
KM**



Referencia	Modelo	Rang. Presión	L/min.	PVP
KM1001150 KM1001100 KM10011210 KM10011350	KM-10/011/50 KM-10/011/100 KM-10/011/210 KM-10/011/350	2.....50 bar 3.....100 bar 10.....210 bar 15.....350 bar	120 120 120 120	
KM1001250 KM10012100 KM10012210 KM10012350	KM-10/012/50 KM-10/012/100 KM-10/012/210 KM-10/012/350	2.....50 bar 3.....100 bar 10.....210 bar 15.....350 bar	120 120 120 120	
KM1001350 KM10013100 KM10013210 KM10013350	KM-10/013/50 KM-10/013/100 KM-10/013/210 KM-10/013/350	2.....50 bar 3.....100 bar 10.....210 bar 15.....350 bar	120 120 120 120	
KM1001450 KM10014100 KM10014210 KM10014350	KM-10/014/50 KM-10/014/100 KM-10/014/210 KM-10/014/350	2.....50 bar 3.....100 bar 10.....210 bar 15.....50 bar	120 120 120 120	
KM1001550 KM10015100 KM10015210 KM10015350	KM-10/015/50 KM-10/015/100 KM-10/015/210 KM-10/015/350	2.....50 bar 3.....100 bar 10.....210 bar 15.....350 bar	120 120 120 120	



**VÁLVULA DE SECUENCIA
NG-6 (CETOP 3) / NG-10 (CETOP 5)
HS - KS**



Referencia	Modelo	Rang. Presión	L/min.	PVP
HS01132 HS011100 HS011210	HS-011/32 HS-011/100 HS-011/210	3.....32 bar 20.....100 bar 50.....210 bar	40 40 40	
KS011100 KS011210	KS-011/100 KS-011/210	7.....100 bar 8.....210 bar	80 80	

