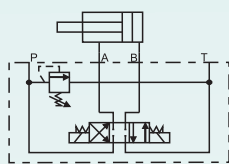
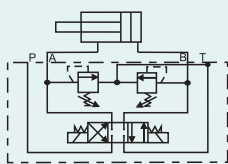




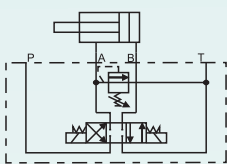
**LIMITADORA DE PRESIÓN
NG-6 (CETOP 3)
HM - HMP**



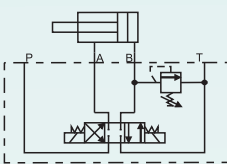
HMP-011
HM-011



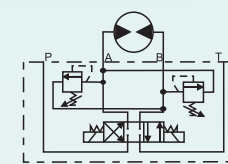
HMP-012
HM-012



HMP-013
HM-013



HMP-014
HM-014



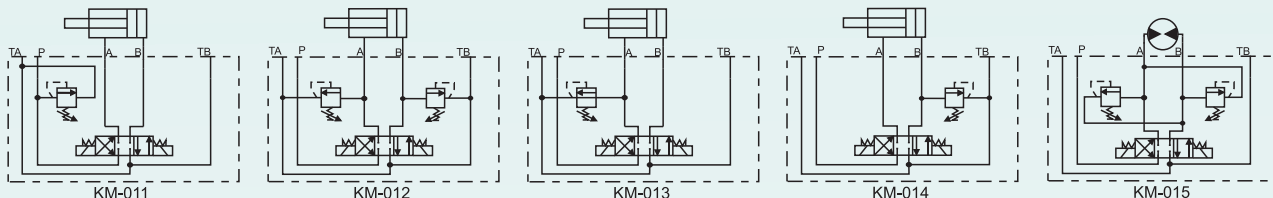
HMP-015
HM-015

Referencia	Modelo	Rang. Presión	L/min.	PVP
HMP06001150 HMP060011100 HMP060011210 HMP060011350	HMP-06/011/50 HMP-06/011/100 HMP-06/011/210 HMP-06/011/350	2.....50 bar 3.....100 bar 10.....210 bar 15.....350 bar	35 35 35 35	
HMP0601250 HMP06012100 HMP06012210 HMP06012350	HMP-06/012/50 HMP-06/012/100 HMP-06/012/210 HMP-06/012/350	2.....50 bar 3.....100 bar 10.....210 bar 15.....350 bar	35 35 35 35	
HMP0601350 HMP06013100 HMP06013210 HMP06013350	HMP-06/013/50 HMP-06/013/100 HMP-06/013/210 HMP-06/013/350	2.....50 bar 3.....100 bar 10.....210 bar 15.....350 bar	35 35 35 35	
HMP0601450 HMP06014100 HMP06014210 HMP06014350	HMP-06/014/50 HMP-06/014/100 HMP-06/014/210 HMP-06/014/350	2.....50 bar 3.....100 bar 10.....210 bar 15.....350 bar	35 35 35 35	
HMP0601550 HMP06015100 HMP06015210 HMP06015350	HMP-06/015/50 HMP-06/015/100 HMP-06/015/210 HMP-06/015/350	2.....50 bar 3.....100 bar 10.....210 bar 15.....350 bar	35 35 35 35	
HM0601150 HM06011100 HM06011210 HM06011350	HM-06/011/50 HM-06/011/100 HM-06/011/210 HM-06/011/350	2.....50 bar 3.....100 bar 10.....210 bar 15.....350 bar	60 60 60 60	
HM0601250 HM06012100 HM06012210 HM06012350	HM-06/012/50 HM-06/012/100 HM-06/012/210 HM-06/012/350	2.....50 bar 3.....100 bar 10.....210 bar 15.....350 bar	60 60 60 60	
HM0601350 HM06013100 HM06013210 HM06013350	HM-06/013/50 HM-06/013/100 HM-06/013/210 HM-06/013/350	2.....50 bar 3.....100 bar 10.....210 bar 15.....350 bar	60 60 60 60	
HM0601450 HM06014100 HM06014210 HM06014350	HM-06/014/50 HM-06/014/100 HM-06/014/210 HM-06/014/350	2.....50 bar 3.....100 bar 10.....210 bar 15.....350 bar	60 60 60 60	
HM0601550 HM06015100 HM06015210 HM06015350	HM-06/015/50 HM-06/015/100 HM-06/015/210 HM-06/015/350	2.....50 bar 3.....100 bar 10.....210 bar 15.....350 bar	60 60 60 60	

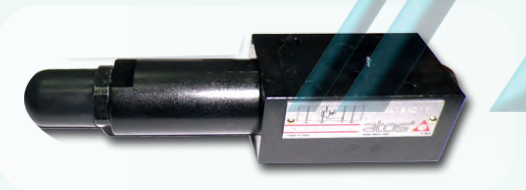




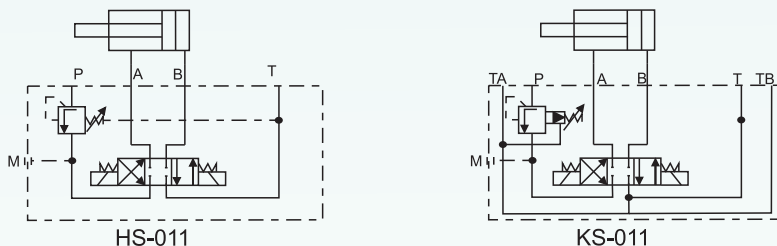
**LIMITADORA DE PRESIÓN
NG-10 (CETOP 5)
KM**



Referencia	Modelo	Rang. Presión	L/min.	PVP
KM1001150 KM1001100 KM10011210 KM10011350	KM-10/011/50 KM-10/011/100 KM-10/011/210 KM-10/011/350	2.....50 bar 3.....100 bar 10.....210 bar 15.....350 bar	120 120 120 120	
KM1001250 KM10012100 KM10012210 KM10012350	KM-10/012/50 KM-10/012/100 KM-10/012/210 KM-10/012/350	2.....50 bar 3.....100 bar 10.....210 bar 15.....350 bar	120 120 120 120	
KM1001350 KM10013100 KM10013210 KM10013350	KM-10/013/50 KM-10/013/100 KM-10/013/210 KM-10/013/350	2.....50 bar 3.....100 bar 10.....210 bar 15.....350 bar	120 120 120 120	
KM1001450 KM10014100 KM10014210 KM10014350	KM-10/014/50 KM-10/014/100 KM-10/014/210 KM-10/014/350	2.....50 bar 3.....100 bar 10.....210 bar 15.....50 bar	120 120 120 120	
KM1001550 KM10015100 KM10015210 KM10015350	KM-10/015/50 KM-10/015/100 KM-10/015/210 KM-10/015/350	2.....50 bar 3.....100 bar 10.....210 bar 15.....350 bar	120 120 120 120	



**VÁLVULA DE SECUENCIA
NG-6 (CETOP 3) / NG-10 (CETOP 5)
HS - KS**



Referencia	Modelo	Rang. Presión	L/min.	PVP
HS01132 HS011100 HS011210	HS-011/32 HS-011/100 HS-011/210	3.....32 bar 20.....100 bar 50.....210 bar	40 40 40	
KS011100 KS011210	KS-011/100 KS-011/210	7.....100 bar 8.....210 bar	80 80	

